



MONOLITH Make people and pets happy

A specialty supplement store for people and pets



Website : <https://cordy-en.com/>

Product Inquiry Contact Information

Monolith Co., Ltd.

〒352-0001

1-3-5 Tohoku, Niiza City, Saitama Prefecture

TEL : 048-474-0884

MAIL : support@naotta.jp



Stay with you

"Is there something I can do for you...?"

This is the book I want you to open when you feel that way.

02 ... Monolith's Thoughts and Commitments

----- [Pet Supplements](#) -----

05 ... Cancer Prevention and Immune Care for Pets **【Cordy】**

15 ... Cordyceps and Lactic Acid Bacteria **【Cordy Flora】**

19 ... Joint, Kidney, and Cardiovascular Health Maintenance **【Krill Oil】**

23 ... Efficiently Supplement Essential Amino Acids **【Amino Fine】**

27 ... Liver and Skin Health **【Placenta 12000】**

31 ... Natto bacteria alive to the intestines **【Natto Sarara Hime】**

----- [Human Supplements](#) -----

33 ... For a Vibrant Daily Life **【Monolith Cordyceps】**

----- [Customer Feedback](#) -----

37 ... Customer Feedback

The Sentiments of Monolith

Supporting the Health of All Family Members Through Supplements

Monolith Corporation is dedicated to protecting the health of families, helping everyone to live a vibrant, happy, and lively daily life.

President Moro discovered the potential of supplements in 1998. He sought ways for his elderly grandmother to maintain her health without relying on medication and eventually found Cordyceps.

Everyone wishes to live healthily and happily for as long as possible. Monolith was established to help make this ideal a reality for everyone.

The Journey to Cordyceps for Health

In the quest for his grandmother's health, President Moro chose the mysterious mushroom, Cordyceps.

The existence of Cordyceps has been known since ancient times.

It is said that Qin Shi Huang, the first Emperor of China, used it for his health, and one of the world's three great beauties, Yang Guifei, sought it to maintain her beauty.

President Moro intuitively felt the power hidden in this mysterious mushroom. Giving Cordyceps to his grandmother confirmed that his intuition was correct.

He then decided to spread the word about the greatness of Cordyceps to as many people as possible.



Repeated Trials and Errors Led to the Completion of the Cordyceps Supplement

Initially, we considered importing Cordyceps from China, where it is traditionally harvested.

However, we encountered issues with the high cost and inconsistent quality of natural Cordyceps, as well as the prevalence of counterfeit products. Faced with these challenges, we decided to cultivate Cordyceps instead of relying on the natural variety.

We began researching the ecology of Cordyceps in 1998, and by 2000, we were studying methods for cultivating Cordyceps. Our research continued with the aim of establishing mass production techniques.

After extensive foundational research, we launched our product "Monolith Cordyceps" in 2007. Following this, in 2009, we also started selling the Cordyceps supplement "Cordy" for pets.

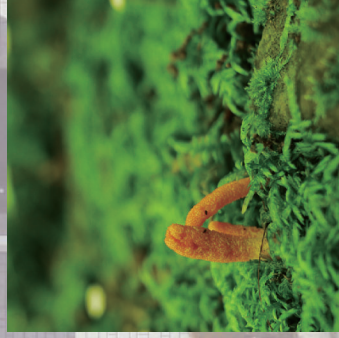
Commitment to Harvesting

The key to cultivating Cordyceps is "freshness." We are committed to using Cordyceps that are as close to their natural state as possible and very fresh. Our harvesting staff travel across Japan to collect natural Cordyceps.



Commitment to Cultivation

The cultivation room operates 24 hours a day, 365 days a year, in a clean room with strict control over "temperature, humidity, and light intensity." We apply unique technologies developed by Monolith, such as ozone generation technology, spatial energy technology, and special water production technology, to our cultivation processes.

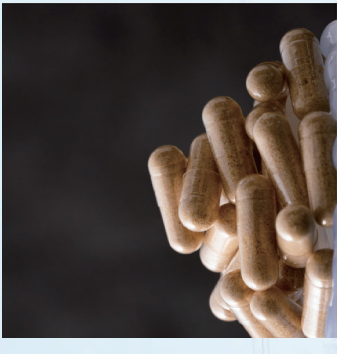


Using All Cultured Materials

The "secondary metabolites" produced by fungi during growth are considered as important as, if not more important than, those in mushrooms. Therefore, our product uses all cultured materials, including the mycelium, fruiting bodies (mushrooms), and secondary metabolites of Cordyceps.

Commitment to Production

After the culturing process, the product passes final inspection and is released. We use high-quality, plant-based HPMC capsules, common in medical products, to prevent deterioration. To avoid unnecessary additives, we offer it in powder form instead of tablets or granules.



Commitment to Safety and Quality

Our manufacturing and quality control processes adhere to GMP standards, from production to shipping in our certified facility. Monolith is one of the few manufacturers with raw material GMP certification. Additionally, we conduct numerous safety tests to ensure our products are safe and reliable.



Regular DNA Identification Testing

Even if we think we are culturing Cordyceps, contamination with other bacteria means it is no longer Cordyceps. Therefore, we regularly conduct DNA identification tests to confirm that the cultured Cordyceps is identical to the original strain.





For Cancer Prevention and Immune Care in Pets

The Source of Vitality is Immune Strength



Immune Care to Start Now for Health and Longevity

Cordy is a supplement designed with animal immunity in mind. It was developed to help maintain health and support the healing of diseases such as cancer.

Immunity is an important defense mechanism of the body. It works continuously, day and night, to protect animal health from diseases such as cancer and infections.

However, we must not overestimate this reliable immunity.

Simple factors like poor diet, lack of exercise, and stress can disrupt immune function. And then there is aging.

Aging is a major factor that lowers immune strength.

There is a clear relationship between immune condition and various diseases and health issues. Let's enhance immunity with Cordy! It can be used not only during cancer treatment and post-surgery recurrence prevention but also for daily health maintenance.

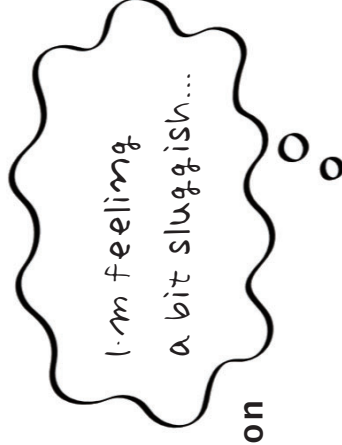
Cancer (malignant tumor)

Aging

Side effects

Decreased immunity, overreaction

Reduced quality of life (QOL)



Point 1 Safe and Highly Rated Cordy

Cordy is a natural immune supplement derived from Japanese Cordyceps. Its use can enhance immune cell activity, inhibit tumors, and eliminate active oxygen, offering various health benefits. It is not a medication, so there is no concern when used alongside anticancer drugs. Additionally, since it contains no additives, it poses minimal burden on the body and can be safely used even immediately after surgery. Cordy has received high praise from several veterinarians who use it in cancer treatment.

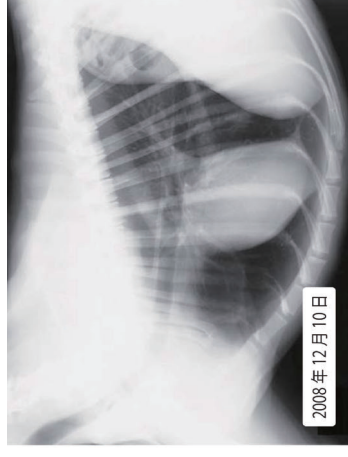
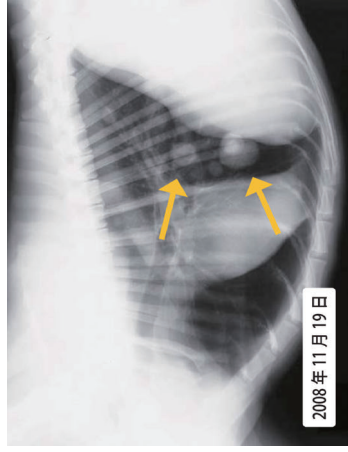
Point 2 Japan-Made "Cordyceps"

Cordyceps has a history of being used for health maintenance for thousands of years. However, due to overharvesting, it has become difficult to obtain, and prices have soared, leading to many low-quality products, including fakes and adulterated items. We often hear concerns about this when purchasing or using Cordyceps. Cordy is a high-quality supplement that uses Japanese raw materials and is manufactured in a factory in Japan. With an original manufacturing method that harnesses the power of Cordyceps, it is a "fighting supplement" to combat diseases.



- Improving Constitution
- Enhancing Treatment
- Restoring Appetite
- Restoring Vitality
- Boosting Natural Immunity
※The body's mechanism to suppress cancer. Quickly attacks cancer. NK cells are typical.

Case (Lung Tumor - Flat-Coated Retriever/Male/25kg)



Multiple tumors were found in the lungs and neck through an X-ray examination. Without conventional treatment, Cordy was administered. After 22 days of administration, an X-ray examination showed that the tumors had disappeared. (Data provided by the owner, a physician)

For cats and non-brachycephalic dogs

Cordy G
(Contains Organic Germanium)



For dogs with rapid breathing or a history of epilepsy

Cordy M

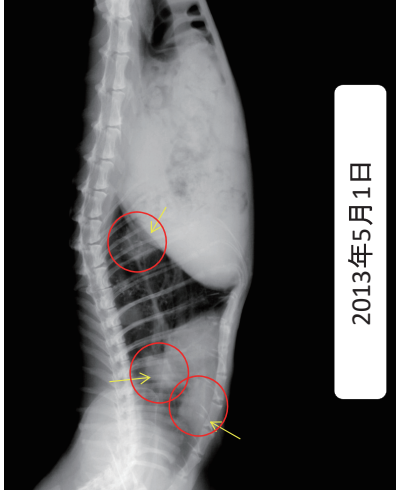


For self-rupturing tumors such as mammary tumors or oral melanomas, use as a spray: Cordy EX

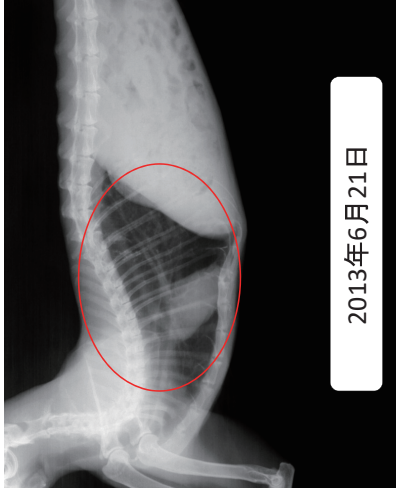


Animal Case Study 01

15-year-old spayed female mixed-breed cat, 2.7 kg Multiple lung tumors



2013年5月1日

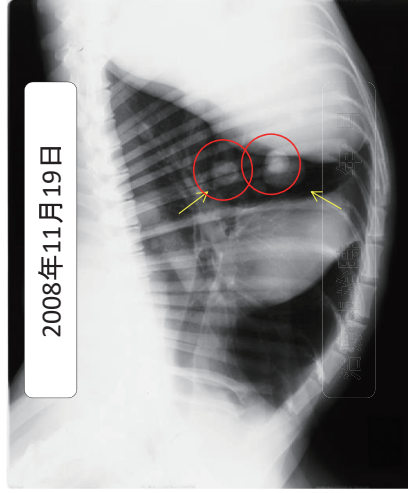


2013年6月21日

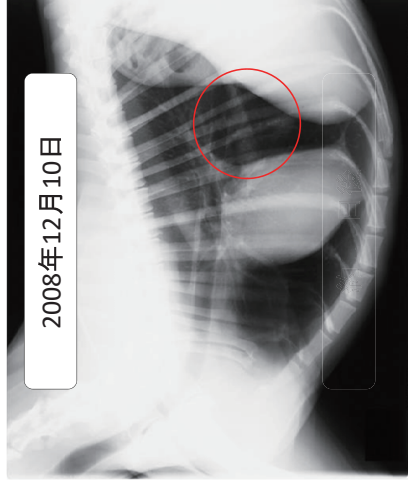
- ◆ On May 1, 2013, the cat was brought to the clinic due to poor condition, loss of appetite, and coughing. An X-ray confirmed multiple lung tumors. The white blood cell count was 16,000, HCT 16%. Treatment with antibiotics and steroids was started, with subcutaneous fluids every 1-2 days.
- ◆ On May 10, the white blood cell count reached 34,900 (likely due to steroids), HCT 20%. About two weeks later, the cat's appetite improved, and the coughing stopped.
- ◆ On May 19, Cordy M was prescribed (treatment continued). Antibiotics were stopped, and steroids were reduced. Subcutaneous fluids were given twice a week.
- ◆ On June 15, a blood test showed a white blood cell count of 5,700 and HCT 40.7%.
- ◆ On June 21, an X-ray confirmed the lung tumors had disappeared, with some bronchial calcification remaining. The disappearance of the tumors is attributed to Cordy M, as antibiotics and steroids do not cause tumors to disappear.

Animal Case Study 02

Male Golden Retriever, 25 kg Lung tumor



2008年11月19日



2008年12月10日

Animal Case Study 03

Japanese cat with lung tumor (malignant lymphoma)



2011年2月28日



2011年4月1日

An X-ray examination confirmed multiple lung tumors. There was also swelling in the cervical lymph nodes, suspected to be lymphoma. No medical treatment was administered, only a prescription for Cordy M.

About 22 days later, an X-ray examination confirmed that both the lung tumors and lymph node swelling had disappeared. Therefore, it is considered that Cordy M was effective.

The cat had been continuously treated with cephalosporin antibiotics at another hospital without improvement. Due to the uncontrollable progression of symptoms, the cat was brought to our clinic for examination. An X-ray (in two directions) confirmed the presence of a tumor shadow over the entire lung. The submandibular and axillary lymph nodes were swollen. A biopsy diagnosed malignant lymphoma, which was not suitable for surgery. Outpatient treatment with Cordy M was started, without any other medical treatment.

About one month later, the X-ray showed no visible lung tumors. Palpation revealed that the swelling in the submandibular and axillary lymph nodes had disappeared. Therefore, it is considered that Cordy M was effective.

Animal Case Study 04

12-year-old male Labrador Retriever, 39 kg, with oral melanoma



At the initial diagnosis



238 days later

A case of oral melanoma treated solely with alternative therapy. Thermal therapy was used to ablate the tumor. After 25 days, a local recurrence was confirmed. Following another ablation treatment, dendritic cell therapy was administered, along with the intake of lupeol and Cordy M. The recurrence was suppressed for a long period.
*This case was published in the April 2013 issue of CAP.



Thermotherapy



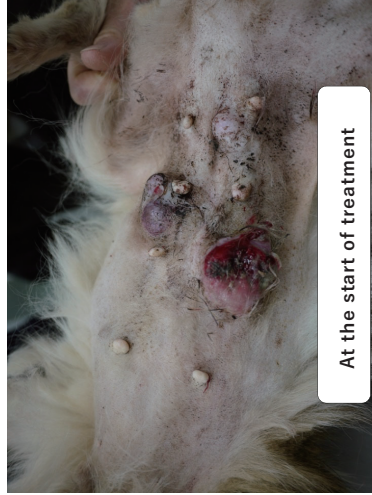
Lupeol



Cordy M

Animal Case Study 05

15-year-old female Papillon with mammary tumor

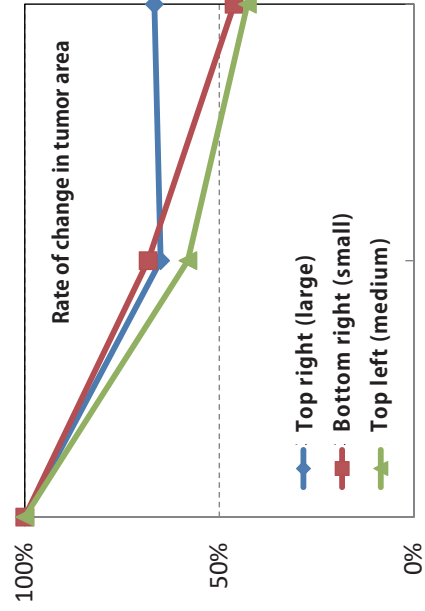


At the start of treatment



Approximately 100 days later

Treated the mammary tumor with Cordy M + Cordy EX (oral and topical spray). The tumor rapidly shrank in a short period, and the overall condition of the body significantly improved. (Right image) Subsequently, two tumors that had transformed into a cauliflower shape were ligated, achieving natural detachment without anesthesia.



Animal Case Study 06

22-year-old female cat, 2.3 kg, with a splenic tumor



On September 29, 2013, palpation revealed an enlarged spleen. On the same day, an ultrasound examination found a partially irregularly enlarged spleen.



On October 1, Cordy M was administered orally. On November 16, palpation and ultrasound examination confirmed that the tumor had shrunk. Chemotherapy was not performed. Therefore, it is considered that Cordy M was effective.

【Use Cases for Malignant Melanoma】

Information provided by: Pet House Kizuna Animal Hospital

Patient Information:

Breed: Beagle

Date of Birth: May 7, 2001 (16 years and 1 month old)

Gender: Neutered Male

Weight: Approximately 11 kg

Heart murmur detected since May 2013 (no treatment)

Diagnosis: Malignant Melanoma

<Treatment>

Surgical removal and Cordy only

<Progress>

2015

April 6: A mass of 5×4×3 mm discovered on the right lower lip in the oral cavity
 April 15: Excision of the mass on the right lower lip in the oral cavity; pathology result
 → malignant melanoma

Around summer: Started Cordy M (0.4 g/kg/day)

Other supplements: Antinol

Diet: Intestinal support

October 21: A black spot of about 3 mm discovered in the same area.

No surgical or other treatments; only Cordy M for monitoring (Photo ①)

Photo ①



2016 May 12: Excision of the tumor in the same area, pathology result → malignant melanoma
 (Multiple tumors on the body surface → epidermal pustules + nodular sebaceous gland hyperplasia
 were also surgically removed simultaneously)

October 21: Discovery of an irregularly bordered black spot about 3 mm in diameter in the same area
 December 7: Same area, Photo ①, no treatment, only Cordy

2017

June 9: Recurrence of the tumor in the same area, excision, pathology result is malignant melanoma.
 No aggressive treatment such as chemotherapy; continuing treatment with only Cordy M (Photo ②).

Due to the dog's advanced age and the fact that melanoma is highly resistant to chemotherapy,
 this Beagle is not receiving chemotherapy. However, the condition has been controlled for a long time with
 Cordy, and the owner is pleased with the results.

Photo ②-1 [Pre-surgery]



Photo ②-2 [Pre-surgery]



Photo ②-3 [Post-surgery]





For Cancer Prevention and Immune Care in Pets

Cordyceps × Lactic Acid Bacteria Cordy Flora

Cordyceps + Lactic Acid Bacteria = Cordy Flora

"If the gut environment is stable, could Cordyceps perform even better?"
With this thought in mind, we conducted research and development to add lactic acid bacteria that support the gut environment to Cordyceps.
The result is "Cordy Flora."

Cordy is a supplement that supports the immunity of pets. Wishing for the health of pets, always wanting them to stay energetic and maintain their appetite, we have received great support from pet owners who share these desires.
Cordy Flora is expected to provide mutual support for immunity and gut environment.

Safe for Pets with Allergy Concerns

A new addition to our lineup is "Cordy Flora [Low Allergy]," which features double cultivation of Cordyceps and lactic acid bacteria using adzuki beans as the base.

Pets with grain allergies found it difficult to consume Cordyceps based on brown rice, or they did not respond well even if they could use it.

Cordy Flora [Low Allergy] uses adzuki beans as the base, which are very low in allergy concerns, making it a safe product for pets with allergy concerns.



Supporting Health with Added Lactic Acid Bacteria Cordy Flora

Ingredients: Cordyceps cultured product, brown rice, lactic acid bacteria, organic germanium Nutritional Information (per 100g):Calories: 402 kcal,Protein: 8.2 g,Fat: 3.1 g, Carbohydrates: 85.3 g,Salt equivalent: 0.02 g



Using Adzuki Beans with Low Allergy Concerns Cordy Flora **Low Allergy**

Ingredients: Cordyceps cultured product, adzuki beans, lactic acid bacteria, organic germanium Nutritional Information (per 100g):Calories: 377 kcal,Protein: 23.5 g,Fat: 1.7 g, Carbohydrates: 67.0 g,Salt equivalent: 0.02 g



Supporting Immunity and Gut Environment with the Power of W

Aiming for "More Vitality" with Double Cultivation of "Cordyceps" and "Lactic Acid Bacteria".

Cordy Series Daily Dosage Guidelines and Administration Methods

- For Cordy M/G/Flora/Capsules, please administer the following daily dosage per 1kg of body weight.
- For Cordy EX (liquid), use 6ml per 1kg of body weight as a guideline.
- ※ One capsule weighs 0.25g.
(1g equals 4 capsules, and you can remove the capsules to check the flavor.)

Cancer Treatment	0.4g or more/kg	It can be administered even if detailed test results are not available. In case of poor condition, you may give 2 to 3 times the usual dosage.
Cancer Recurrence Prevention	0.2 - 0.4g/kg	When the condition is stable after surgery or treatment. However, for highly malignant diseases, 0.4g or more is recommended.
Cancer Prevention (for Seniors & Cats)	0.1 ~ 0.2g/kg	Elderly pets (over 10 years old), those who are usually sick, and pets that are virus carriers such as feline leukemia and feline AIDS.
Daily Use (for dogs under 10kg)	0.1g/kg	Give to pets with concerns about their regular immunity, before and after vaccination, during and after illness, and when experiencing lethargy or loss of appetite.

"It is recommended to administer the daily dosage in 2 or more divided doses per day, preferably in 5 to 10 portions."

You may mix it with food or suspend it in drinking water. It can also be given on an empty stomach. The bitterness and odor are not strong, but if there is resistance, start with a small amount and gradually increase to accustom the animal. If the condition improves, you may gradually reduce the dosage while monitoring the situation.

Adding a small amount of water to Cordy to knead it into a dumpling shape and dividing it into portions can make it easier to administer.

Calculation of Cordy Dosage (During Cancer Treatment)

*The guideline dosage for EX is 6ml / kg.

Daily Dosage Guideline = Body Weight kg × 0.4g = g

Example of Daily Dosage:

For a pet weighing 5kg: $5 \times 0.4g = 2g$ / For a pet weighing 10kg: $10 \times 0.4g = 4g$

- For External Use (Apply/Spray Several Times a Day)
External use is possible for accessible mammary tumors and skin cancers.
Add approximately 10ml of water to 0.1g of Cordy and apply or spray the supernatant solution on the affected area.
The remaining Cordy can be given as is.
Apply or spray Cordy EX directly on the affected area.
- For Oral Cancer
Increasing contact with the affected area may enhance the response.
In addition to mixing it with food, try adding a small amount to drinking water.

■ Cordy M/G/Flora (Using Brown Rice Medium)

- The included spoon measures approximately 1g when leveled.
- Cordy Flora [Low Allergen] (Using Adzuki Bean Medium)
The included spoon measures approximately 1.5g when leveled.

Cordy Series Frequently Asked Questions

Q I mixed it into the food, but my pet won't eat it.

A Some pets may start eating if you gradually increase the amount.

Mixing it with bonito flakes, powdered cheese, or honey may also make it more appealing. If your pet still won't eat or has a poor appetite, try using a syringe (injector) or wrapping it in an oblate. You can also add a small amount of water to the Cordy, knead it into small dumplings, and let your pet swallow it.

Applying it to the roof of their mouth or putting it in their cheek can often help them eat it, so please try this method. If the parents eat a small amount of Cordy and say it's "delicious," the pet may lose its wariness and eat it. Please try various ways to give it to your pet.

Q Can it be used together with medications or other supplements?

A There have been no reports of problems when used together with medications in the past. It can be used together with steroids, antibiotics, and anticancer drugs.

However, if used with adsorbents, please leave about 30 minutes between administrations. If you have any questions about using it together with other substances, please consult us.

Q Is there anything else we need to address?

A Review your pet's diet. For pets with cancer, we recommend a low-carbohydrate diet.

Ensure they receive quality proteins, vitamins, and minerals. In some cases, it's fine to give them meat or fish that humans eat instead of sticking strictly to pet food. A low-carbohydrate, high-protein diet is also recommended for weight loss and diabetes management. Keeping their body warm is important, but we do not recommend electric carpets or heating pads.

Avoid using cat litter that produces a lot of dust, as it can affect the health of both the pet and the owner.

Q Is it safe if a cohabiting pet eats it?

A It's perfectly safe for healthy pets to eat it. Some pets really enjoy meals mixed with Cordy, so please ensure that the portions for the pets you truly want to feed are not reduced.

Cancer is a disease that can potentially be prevented with daily care.

Giving a small amount to healthy pets is also a good practice.

Q The color seems darker (lighter) compared to the previous product.

A Since we use natural materials, even if the same type of Cordyceps is cultured using the same method, there will inevitably be variations in color. We have not changed the manufacturing process, so please feel assured when giving it to your pet.
Also, no colorants or preservatives are used.



For maintaining joint, kidney,
and cardiovascular health

Bound with phospholipids

”Omega-3”

That's why absorption is different !

コルチエイラス
クリルオイル30

リン脂質と結合したオメガ3
だから吸収力が違う!

コルチエイラス

『ヒューマングレード・高品質』
南極オキアミから抽出した水に溶ける赤いオイル

クリアルオイル

強力抗酸化成分アスタキサンチンが
オメガ3の酸化をブロック

リン脂質結合型オメガ3 脂肪酸

DHA EPA DPA



『Human-grade, high quality』

Krill Oil

Krill oil is extracted from Antarctic krill. It is better absorbed than fish-derived
DHA and EPA, and is gaining attention in the U.S.

※It seems that krill oil made from non-Antarctic
krill is also on the market. Please be careful.



The beautiful Antarctic
krill as a material.

Clean oil rich in
DHA and EPA.

The notable smooth ingredients.

Phospholipid-bound omega-3 fatty acids.

DHA EPA DPA

Omega-3 fatty acids are said to reduce inflammation
and eliminate reactive oxygen species.



DHA absorption rate.

About **3** times
that of blue fish-derived DHA.

Strong against
oxidation

The red pigment (astaxanthin)
suppresses degradation with
its antioxidant power.

Can pass through the blood-brain barrier.

Krill oil can cross the blood-brain barrier. Therefore, it can be expected
to support various brain functions, such as memory and cognition.

No need for digestive enzymes.

Krill oil contains EPA/DHA from the start, so unlike alpha-linolenic
acid found in flaxseed oil, it does not require digestive enzymes.

How to administer krill oil.

In capsule form, just the oil inside, dissolved in hot water, as is, poured over food, or with a syringe.



(Capsule diameter: 12 mm)

Recommended daily intake

1-2 capsules per 5 kg of weight.

※Adjust the dosage according to your condition.

Approximate guidelines: 10 kg body weight: 2-4 capsules, 20 kg body weight: 4-8 capsules, 30 kg or more: 6-12 capsules.

When dissolving in hot water.



Place the capsules in a cup and pour a small amount of hot water.

(Approximately 30-50cc depending on the number of capsules)

The oil will dissolve in about 3-4 minutes.

※Hot water around 90° C will not affect the quality.

Calculated per capsule with 250mg of krill oil (reference analysis values): Total phospholipids ≥100mg, EPA ≥30mg, DHA ≥13.75mg, Omega-3 ≥55mg, Omega-6 ≥7.5mg, Astaxanthin ≥0.032mg.

【Usage Precautions】

○Adjust the feeding amount as needed. ○Discontinue use if it does not suit your pet's constitution.

○Be cautious if your pet has a shellfish allergy. ○Use as soon as possible after opening.

○Natural raw materials are used, so there may be differences in color and smell, but there is no problem with the quality.

【Ingredients】 Crude protein: 27% or more, Crude fat: 60% or more, Crude fiber: 0.1% or less, Crude ash: 3% or less, Moisture: 9% or less 【Name】 Nutritional supplement for dogs, cats, and small animals 【Ingredients】 Krill extract / Gelatin, Glycerin 【Content】 12.3g (410mg x 30 capsules: each capsule contains 250mg of krill oil) 【Storage method】 Avoid direct sunlight and high humidity, store in a cool, dark place. 【Country of origin】 Japan

Feeling strained or tired eyes.

Night crying, wandering.

Maintaining skin health and coat shine.

Concerned about cholesterol.

Want to keep the heart, liver, and kidneys healthy.

Excess fat.

For joint health.

Recommended for such occasions!



We also take it.

Children: 3-8 capsules per day,
Adults: 6-8 capsules per day.



Noteworthy ingredients recognized by experts.

Dr. Ichiro Yazawa "Doctor of Agriculture. President of the Krill Oil Research Association. Japan's leading expert in omega-3 and krill oil research, with numerous publications and papers.

Krill oil, a mainstream superfood in Europe and the U.S.

DHA and EPA, the smooth ingredients found in blue fish, are essential fatty acids called omega-3, which are crucial for maintaining health. However, since they cannot be produced in the body, they need to be consumed daily through diet. Currently, krill oil, extracted from Antarctic krill, is gaining attention as it provides DHA and EPA more efficiently than fish oil. Krill refers to small shrimp-like plankton species known as Euphausia superba, which inhabit the clean and pristine waters of Antarctica. Krill oil extracted from these Antarctic krill is less likely to accumulate impurities (*1) and is highly safe.

(*1) In the health food giant America, "krill oil" is highly regarded as a new health ingredient compared to fish-derived DHA.

(*1) Source: "New Omega-3 Krill Oil Derived from Antarctic Krill" by Kazuyoshi Yazawa, Heart Publishing.



Efficiently replenish essential amino acids.

Human-grade complementary food for animals.

Amino Fine

100% Amino Acid Blend

Contains essential amino acids

BCAA

Valine 10%

Leucine 40%

Isoleucine 20%

+Lysine, Arginine, Taurine, Tryptophan

Amino acid supplement containing essential amino acids, particularly BCAAs (valine, leucine, isoleucine), along with lysine, arginine, taurine, and tryptophan.

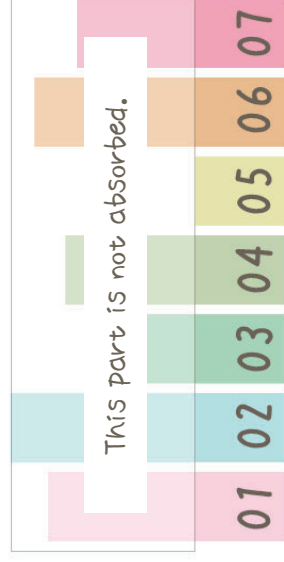
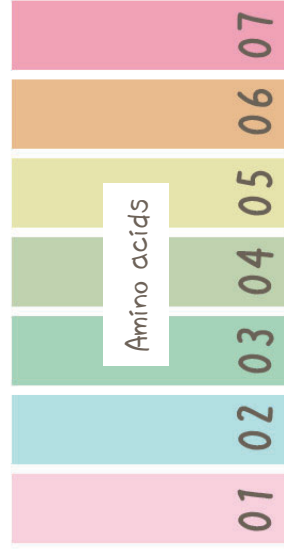


Efficiently replenish essential amino acids to support the body and immune system.

Amino acids are not only the materials for organs, skin, muscles, hair, ligaments, cartilage, nails, and blood but also for digestive enzymes, hormones, and immune substances essential for maintaining health.

Protein (amino acid) intake is indispensable for life. Essential amino acids are nutrients (amino acids) that cannot be produced in the body and are consumed even while sleeping, so they must be supplemented through diet.

There are nine essential amino acids for humans, ten for dogs, and eleven for cats. If even one of these is deficient, the absorption of other amino acids is limited to the amount of the deficient one.



When there is a decrease in appetite or when a protein-restricted diet continues, it is important to be aware of amino acid deficiency. Essential amino acids, which can only be supplemented through diet, become insufficient, leading to the breakdown of muscle to compensate for the lack of amino acids. As a result, muscles become thin, bones become prominent, and legs and lower back weaken, causing a loss of energy. Additionally, amino acids are also materials for the immune system, so a deficiency leads to a weakened immune system and overall physical weakness.

Amino Fine is a 100% amino acid supplement for dogs and cats that includes high levels of BCAAs (valine, leucine, isoleucine), which are particularly prone to deficiency, along with lysine, arginine, taurine, and tryptophan. Since it is pure amino acid, it can be supplemented without burdening the kidneys. Amino Fine is recommended for daily meals of dogs and cats when there is a concern about protein deficiency.



Recommended for pets with these concerns.

- ✓ On a kidney therapy diet/protein restriction
- ✓ Want to maintain kidney and liver health
- ✓ Managing blood sugar levels
- ✓ Concerned about flabbiness/want to tighten the body
- ✓ Want to maintain muscle mass
- ✓ Worried about frailty/unsteady legs and lower back
- ✓ Want to maintain coat shine and quality

【How to administer】

Mix with food or dissolve in water and administer with a syringe.

【Recommended daily intake】 Using the included spoon:

Very small dogs (up to 2kg): 0.5-1 spoonful x 2 times

Small dogs/cats (up to 7kg): 1-1.5 spoonfuls x 2 times

Medium dogs (up to 15kg): 2-3 spoonfuls x 2 times

Large dogs (up to 40kg): 3-4 spoonfuls x 2 times

Very large dogs (over 40.1kg): 4-6 spoonfuls x 2 times

※ Adjust the amount given as needed, regardless of the guidelines, to make it easier to administer.

【Usage precautions】 ○Adjust the feeding amount as needed.

○Discontinue use if it does not suit your pet's constitution. ○Use as soon as possible after opening. ○There may be color variations due to the natural raw materials, but there is no problem with the quality.

【Ingredients】 Crude protein: 98% or more, Crude fat: 0.01% or less, Crude fiber: 0.01% or less, Crude ash: 0.01% or less, Moisture: 0.5% or less



For liver and skin health.

Contains 12,000 mg of 100% domestically sourced SPF pork placenta extract powder.

Placenta 12000



Recommended for pets with these concerns.

- ✓ Pets taking medication
- ✓ Pets that want to maintain energy and appetite
- ✓ Pets that want to maintain energy and protect the liver
- ✓ Pets that want to maintain coat shine and quality
- ✓ Pets that want to keep their skin healthy

What is placenta?

Placenta has excellent functions that enhance natural healing power, and it is said that Cleopatra and the First Emperor of Qin treasured it as an elixir for eternal youth and beauty. Nowadays, it is also used as a pharmaceutical. It is expected to have many effects, such as cell activation, wound healing promotion, anti-fatigue, liver cell regeneration, and removal of active oxygen. There are also many cases where improvements were seen in a short period.

Full of placenta!

Placenta 12000 (30g pack) contains a generous 12,000 mg of domestically sourced SPF pork placenta extract powder per bag. It is in powder form, without any unnecessary excipients used for making tablets, so you can use a generous amount of placenta components at a great value. It is also a perfect match with Cordy. Placenta 12000 is recommended for pets using medications that heavily burden the liver, such as steroids or anticancer drugs.



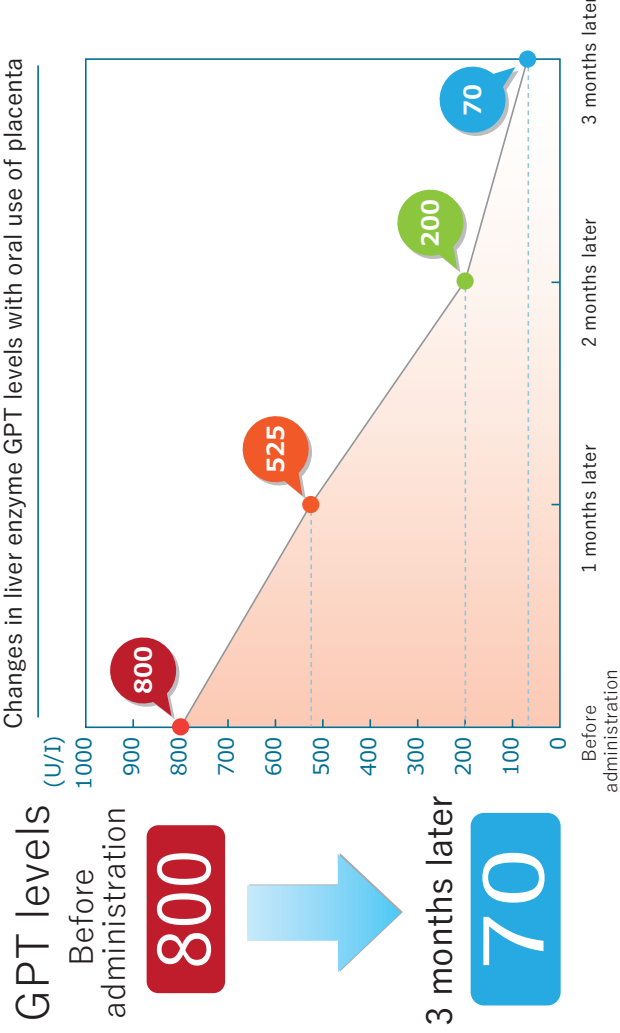
Manufactured in a GMP-certified factory for peace of mind.

This high-quality placenta supplement uses domestically sourced placenta, is manufactured in a GMP-certified factory, and has passed safety tests. You can use it with confidence.

Liver function

Japanese Cat, 16-year-old male
Decreased liver function

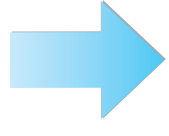
Changes in liver enzyme GPT levels with oral use of placenta



GPT levels

Before administration

800



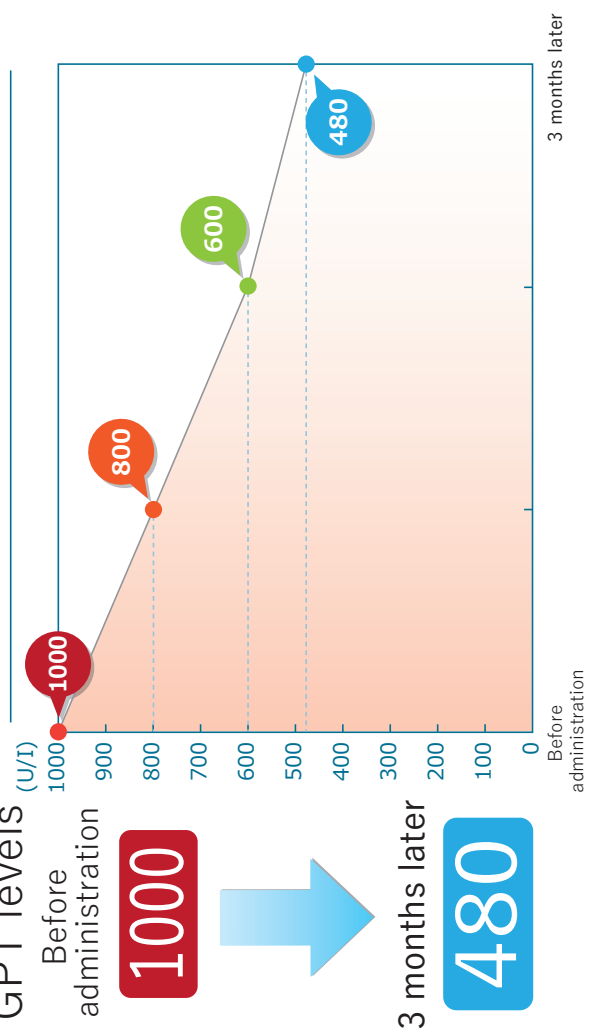
3 months later

70

Liver function

Miniature Dachshund, 12-year-old male
Liver tumor, hepatomegaly

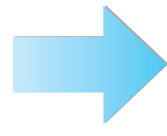
Changes in liver enzyme GPT levels with oral use of placenta



GPT levels

Before administration

1000



3 months later

480

Skin disease

Standard Poodle, 2-year-old
Worsening of surgical wound



3 weeks later

Skin disease

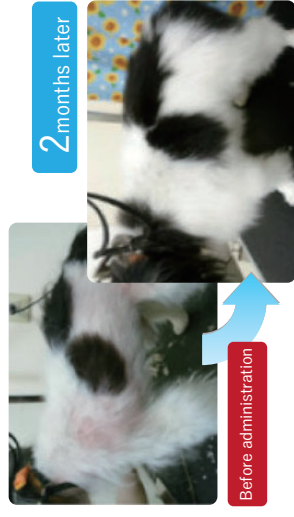
Guinea Pig, Dermatitis caused by mite allergy
Combined with Cordy



75 days later

Skin disease

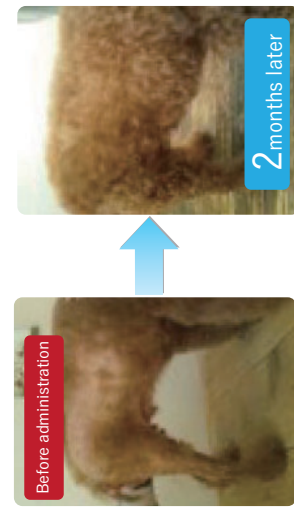
Papillon, 8-year-old male
Hair loss due to skin roughness



2 months later

Skin wound

Toy Poodle, 6-year-old male
Dermatitis due to hypothyroidism



2 months later

Weight	Daily dosage	5g Pack	30g Pack
~5kg	0.1~0.2g	25~50 days	150~300 days
5~10kg	0.2~0.3g	18~25 days	100~150 days
10~20kg	0.3~0.5g	10~18 days	60~100 days
20~40kg	0.5~1.0g	5~10 days	30~60 days
40kg~	1.0g~	~5 days	~30 days

It is acceptable to administer 1.5 to 2 times the dose.

Green spoon: Level full, approximately 1g can be measured.

White spoon: Level full, approximately 0.1g



Natto bacteria alive to the intestines

Natto Sarara Hime



Recommended for pets with these concerns.

- ✓ Has not been eating regular meals much
- ✓ Wants to get balanced nutrition
- ✓ Concerned about health as age increases
- ✓ Concerned about cavities and periodontal disease

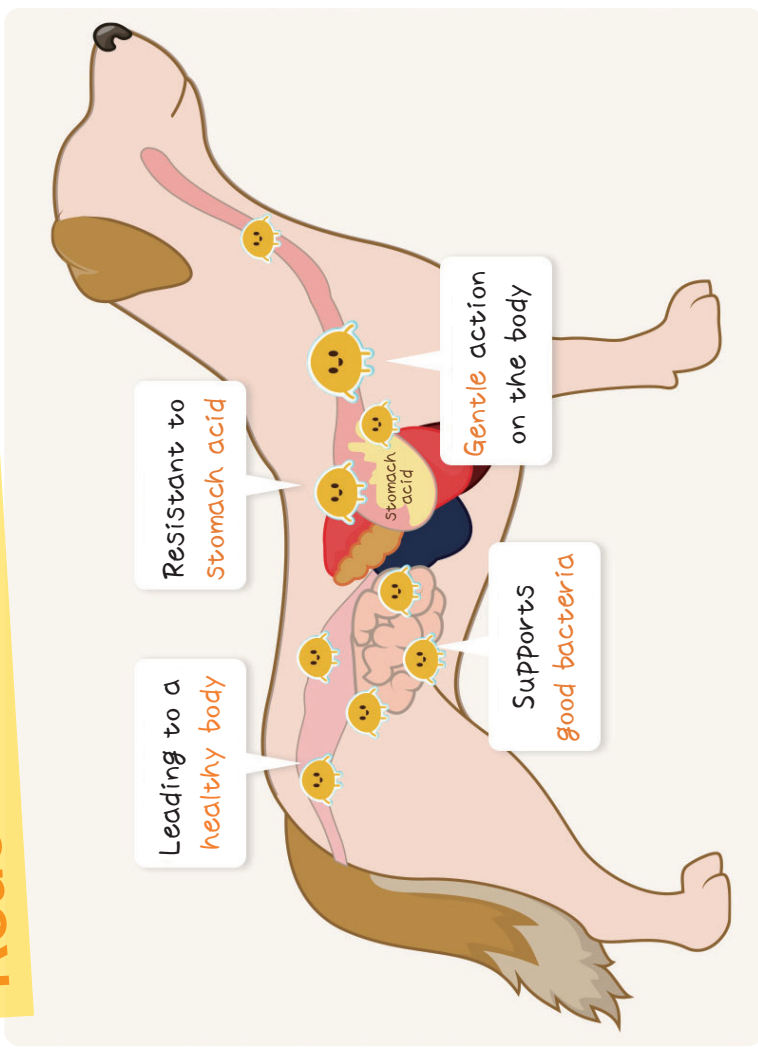
*Natto Sarara Hime is human grade.

It can be enjoyed by everyone, from children to the elderly.

One teaspoon of Natto Sarara Hime contains approximately

8.3 billion natto bacteria!

Reaches the intestines alive!



Natto is a superfood that provides balanced nutrition. Just sprinkle Natto Sarara Hime on your regular food to manage your health. One teaspoon contains the same amount of natto bacteria as one pack of natto, approximately 8.3 billion bacteria. Because the bacteria reach the intestines alive, their power is maximized. Natto bacteria have been shown to maintain a healthy environment in the mouth. They help maintain oral health in dogs, protecting them from cavities and periodontal disease. Using carefully selected high-quality soybeans produced in Japan (Kyushu), this supplement is made by a traditional natto maker with over 70 years of history, ensuring safety and reliability. It is the same quality as the product for humans, so please try it with your entire family.



To a lively and vibrant everyday life

We always keep 'safety and security' in mind, and continue our efforts to contribute to everyone's 'joy of health' and 'lively and vibrant everyday life'.

Monolith Cordyceps



What is Monolith Cordyceps?

Cordyceps is a type of mushroom that parasitizes insects to grow.

In China, it is said that Emperor Qin Shi Huang consumed it for his health, and Yang Guifei drank it to maintain her beauty. It has been treasured since ancient times as a part of imperial cuisine and medicinal dishes.

In recent years, due to its rarity and overharvesting, the price has soared to about 10,000 yen per gram, leading to the social issue of fake Cordyceps circulating. "Monolith Cordyceps" is our original nutritional supplement, made by selecting several natural Cordyceps from about 400 species that inhabit Japan, collecting and culturing them from the wild.

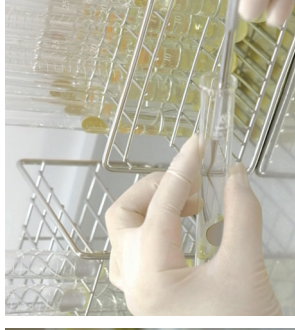
We regularly conduct DNA identification tests and safety tests by third-party organizations to ensure safety.

For your "joy of health" and "lively and vibrant everyday life," please make use of "Monolith Cordyceps" with confidence.

"Monolith Cordyceps" is made by carefully selecting, culturing, and manufacturing Japanese Cordyceps with attention to detail from the initial collection to the final product.

Commitment to Harvesting

Through research in collaboration with a venture from the University of Tokyo, we discovered that repeated cultivation of Cordyceps reduces its activity. To "maximize the power of Cordyceps," fresh Cordyceps are essential, making daily fieldwork indispensable. Though it is a dirty and costly endeavor, our staff travels across Japan for approximately 100 days a year to continue harvesting Cordyceps.



Commitment to Cultivation

Application of Unique Cultivation Techniques

After the harvested Cordyceps are selected under a microscope, the fungi are further made to compete, selecting only the strongest fungi. Cultivation is carried out in a clean room where "cleanliness, temperature, humidity, and light" are controlled 24 hours a day, 365 days a year.

In the 1980s, we conducted research and development in collaboration with the University of Tokyo on ozone technology, which has sterilizing effects and promotes the growth of fungi. We combine many technologies, including spatial energy technology and special water production technology, to enhance the cultivation effect of Cordyceps.

Utilization of All Cultivated Material

As Cordyceps are cultivated, they extend hyphae into the medium, form mycelium, and eventually extend fruiting bodies (mushrooms). At the same time, they produce "secondary metabolites*." "Monolith Cordyceps" uses all cultivated material, including secondary metabolites.

*Secondary metabolites produced by fungi include well-known antibiotics such as "penicillin." These secondary metabolites, produced during the growth stage of fungi, are considered to contain components as important as or even more important than the hyphae themselves.

Commitment to Production

Once the cultivation process is complete, we proceed to product manufacturing. Under strict management in a GMP-certified factory, the products undergo manufacturing and inspection before being released. To maintain quality over a long period, we use HPMC capsules, which are plant-derived and widely used in pharmaceuticals, for their strong resistance to moisture and dryness.

Commitment to Safety and Quality

- Manufacturing of Raw Materials in a GMP Certified Factory
Pursuing safety and quality, we consistently perform manufacturing management and quality control from the cultivation of Cordyceps to the final product in a GMP-certified factory.

※GMP stands for "Good Manufacturing Practice," which is a standard for manufacturing and quality management in factories. It ensures that products are made safely and with consistent quality.
(Certified by the Japan Health and Nutrition Food Association, JIHFS GMP)

In Japan, GMP for supplement manufacturing is not mandatory, and obtaining and maintaining GMP certification requires a lot of time, effort, and cost. Therefore, there are still few companies that manufacture supplement ingredients according to GMP standards. Monolith Corporation is one of the few manufacturers certified for raw material GMP.

- Conducting Many Safety Tests
Prioritizing "safety," we conduct safety tests such as acute toxicity tests, subacute toxicity tests, Ames tests, and genotoxicity tests at GLP-compliant institutions※ to confirm safety.

※GLP-compliant institutions: Institutions compliant with GLP (Good Laboratory Practice) standards established by the OECD, which ensure that tests and examinations evaluating the safety of pharmaceuticals, chemicals, etc., are conducted accurately and appropriately.

- Regular Radiation Testing Conducted
Since Monolith Cordyceps receives many inquiries from overseas, we conduct regular radiation tests to confirm that no radioactive substances are detected.

- Conducting DNA Identification Tests
During the cultivation of Cordyceps, it is necessary to eliminate contaminants and cultivate only the Cordyceps fungus, but there is no zero risk of other fungi mixing in. Therefore, we regularly conduct DNA identification tests to confirm that the cultivated Cordyceps is identical to the original fungus.

- The cultivated fungus has 100% identical DNA to natural Cordyceps
Monolith Cordyceps has been proven through DNA identification tests (molecular analysis) conducted by the largest microbiological research institute in China, the Institute of Microbiology, Chinese Academy of Sciences (IMCAS), to have 100% identical DNA to the fungus isolated from natural Yunnan Cordyceps and Tibetan Cordyceps (Cordyceps sinensis): *Isaria cicadae*.

Recommended for the following people

- ✓ People whose lifestyle habits are often disrupted
- ✓ People who want to spend their days powerfully
- ✓ People who engage in intense sports
- ✓ People who want to live energetically and youthfully
- ✓ People who want to maintain their body balance
- ✓ People who want to greet spring feeling refreshed

How to Consume

As a dietary supplement, please consume 4 to 12 capsules per day with water or lukewarm water.

Caution

- Keep out of reach of children.
- Consume promptly after opening.
- If you have allergies or if this product does not suit your constitution, please refrain from using it.
- Pregnant or breastfeeding women should refrain from using this product.
- In principle, this product is food, but it may be uncomfortable for some people; any abnormalities are not a concern.
- If you find any defects in the product, please contact our company.

Product Name: Monolith Cordyceps

Name: Processed Food with Cordyceps Mycelium Powder

Ingredients: Cordyceps mycelium powder, capsule material: HPMC

Origin of Raw Materials: Japan (Cordyceps mycelium powder)

Content: 37.8g (315mg (contents 250mg)) × 120 capsules

Storage Method: Store in a cool, dry place away from direct sunlight.

HPMC (Hydroxypropyl Methylcellulose) is a cellulose derivative made from plant fibers such as pine trees and is non-caloric.



Customer Reviews

Many dogs and cats are using it with love.

Thank you very much!



A 7-year-old male cat diagnosed with a tumor and given two months to live. I was prepared to see him through his last days, but I started giving him this supplement to maintain his QOL until the end. It's been a year since then. He's become so energetic that it's like a miracle, and now he's more active than before he got sick! Cordy G is a supplement with mysterious powers. I truly believe that if I hadn't done anything back then, he wouldn't be here today. I'm so glad I bought it. I think I will continue using it for life!

To my dog with lymphoma, it seems the sparkle in his eyes has returned.



Two years ago, when my dog turned 8, he began to experience health issues like hernias. Recently, lymphoma was discovered. He is currently undergoing treatment with chemotherapy and steroids. He lost his energy, spent more and more time lying down, his breathing became labored, and he had no appetite... Weekly blood test results were not good. One week after starting Cordy M... Now, his breathing has calmed, his appetite has returned, and the sparkle in his eyes is slowly coming back. The blood test results show that the white blood cell count and lymphocyte count have somehow stabilized and decreased. I am grateful.

Able to Walk Again



This is an 8-kilogram Bichon Frise. He had kidney and liver disease and was in a very dangerous state due to uremia a year ago. He was hospitalized for about 3 weeks and gradually recovered thanks to the veterinarian. After being discharged, I started mixing this with his evening meals. After discharge, he had lost muscle and could barely walk, but after giving him this, he began walking briskly. Now, he even runs around the house. His blood test results have also returned to normal ranges. I plan to continue using this product.

Adding Vitality to Life



I was diagnosed with cancer that had spread throughout my body and started taking the human version. Yesterday, I began chemotherapy, but there have been no side effects (though they may become severe from now on). I secretly bring it to the hospital and drink it. I was amazed at how quickly my wounds healed. I feel this is the strongest natural power. I am deeply grateful to have encountered such a wonderful product and for it saving my pets' lives! Thank you very much! (^ ^)

Elderly Miniature Dachshund



My 17-year-old miniature dachshund could not stand due to a hip hernia. Acupuncture improved his condition quite a bit, but recently he could not stand up quickly, which was troubling. A few days after starting to take it, I noticed he was properly standing and walking, which was amazing. We have three other 13-year-old miniature dachshunds at home, so we give it to all of them. They are all very healthy. Thank you very much.

For My Cat with High Liver Function



During a pre-neuter check, it was discovered that my cat's liver function numbers were elevated. The following year, a checkup showed high liver function numbers again, and I was disheartened by the explanation that a re-examination was needed. I didn't want to subject my cat to another injection or medication, so I searched online and found Cordy Placenta. I hesitated but purchased it immediately. My cat seemed to like the taste so much that he would beg for it just by seeing the package. During this spring's checkup, his liver function numbers had dropped to half of what they were last year, and the veterinarian said, "It's much better!" Thanks to the placenta, his fur has become glossy, and he has become more energetic and playful. It contains no additives, so it looks like this will be a lifelong companion for him. I will work hard for my beloved cat (^ ^)



At the beginning of October this year, an abdominal ultrasound revealed a 1 cm tumor in the bladder. Knowing that most bladder tumors are malignant, I was in despair when I discovered Monolith's products. I immediately purchased Cordy, Amino Fine, Krill Oil, and Placenta. In fact, my beloved dog is a 14-year-old senior dog suffering from heart disease. We chose not to undergo radiation therapy or harsh chemotherapy with side effects, but rather to pursue palliative care. After administering the supplements daily with a dropper in five divided doses, within just one week, his appetite returned, and he was able to go for walks. Then, when we visited a major hospital for palliative care in November, the tumor had completely disappeared. The veterinarian was also very pleased. However, early-stage kidney disease and cholelithiasis were discovered, so I will continue to use Monolith's supplements for improvement. I am deeply grateful for saving my dog's life.